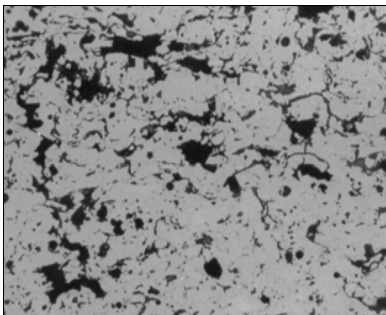


Coating Solutions

Do you know if your coating lab failures are test procedure or spray process driven?

Are your Testing/Process Procedures under control?

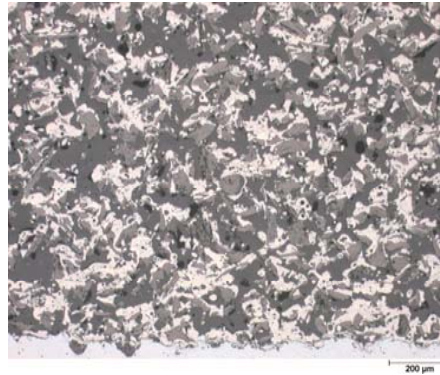
Do varied requirements from different customers cause problems?



Is this the true porosity level?



Nickel Graphite Powder 200X



Nickel Graphite Coating 50X

7608 Trailwind Drive
Cincinnati, Ohio 45242
JoPSauer@fuse.net

[wwwSauerEngineering.com](http://www.SauerEngineering.com)



**Coating Solutions
thru Engineering Support:**

**Your Technical
Resource for Evaluation
and Coating Process
Problems**



Phone: 513.984.8709
Fax: 513.984.4156
Cell: 513.290.3617
www.SauerEngineering.com

Coating Evaluation

Testing and evaluation of coatings is a very difficult task.

Your evaluation procedures must be well defined and under control to achieve the

true measure of coating quality and properties.

SAUER ENGINEERING

can help you

understand, define, document your needs

for coating evaluation.

Typical tasks can be:

- Formulation and teaching of specialized training courses tailored to your specific site or company needs
- Coordination of Round Robin (RR) testing to improve consistency at single/multiple site locations
- Assistance in obtaining certification from varied OEM's and groups such as NADCAP/CCL, etc.
- Development/revision of testing procedures for varied coating evaluation methods

Testing/Process Procedures

In today's repair and industrial markets, concise and well written

testing/process documents are a necessity for efficient and consistent repairs and processing.

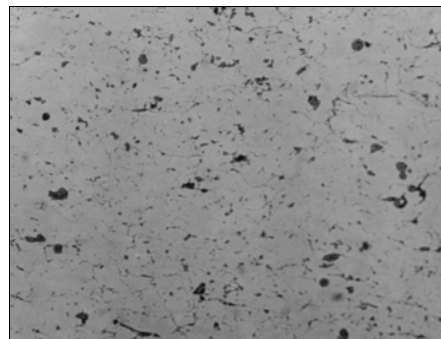
SAUER ENGINEERING

can help you

understand, define, document your needs for coating procedures.

Typical tasks can be:

- Engineering assistance on large projects to develop/revise procedural with relation to materials and coating evaluation requirements
- Assessment of your procedural needs
- Assistance in developing and managing the system for qualification of coatings at varied sources



The true porosity level!

Principal Consultant

John P. Sauer P.E.

- Bachelor/Master's in Metallurgy
- Over 20 yrs of engineering experience in both commercial and aerospace industries
- 15 yrs in testing/evaluation of engineered materials
- 1993-1998 Manager of Central Coatings Lab (CCL) a GEAE driven program conducting standardized coatings evaluation training around the world
- Experience with major OEM's such as Pratt, GEAE, and SNECMA providing SPM/procedural support
- Current involvement with such groups as ASM TSS, EACMT, HCAT/CHCAT, and NADCAP in standardizing coating evaluation



7608 Trailwind Drive
Cincinnati, Ohio 45242
JoPSauer@fuse.net

Phone: 513.984.8709
Fax: 513.984.4156
Cell: 513.290.3617
www.SauerEngineering.com